

# Vacuum Components

## Adapters, reducers, fittings

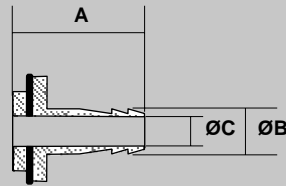
---



# Vacuum Components Overview

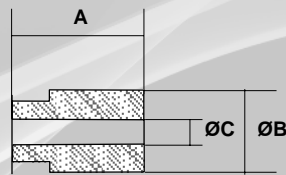
## Adapters

### • Male thread - hose



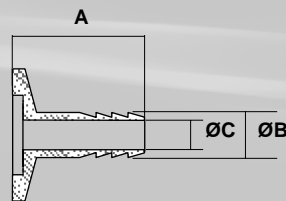
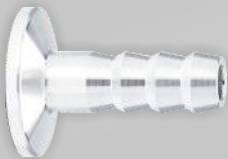
Art. no.	Connection	Material	A	B	C	D
VD81SW1	G1/4"	Brass, nickel-plated	32	6 / 8	5	-

### • Male thread - 7/16" UNF



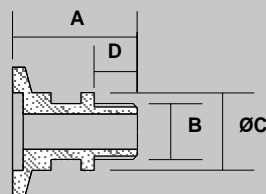
Art. no.	Connection	Material	A	B	C	D
ZG14UNF716	G 1/4"	Brass	35	19	10	-

### • ISO-KF Flange - hose



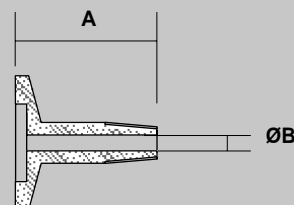
Art. no.	DN	Material	A	B	C	D
ZSW1612	16 KF	Stainl. steel	40	12	8	-

### • ISO-KF flange - male thread



Art. no.	DN	Material	A	B	C	D
ZG1614	16 KF	Stainl. steel	29	G 1/4"	18	10

### • ISO-KF flange - NPT male thread



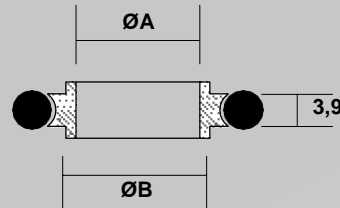
Art. no.	DN	Material	A	B	C	D
ZNPT14	16 KF	Stainl. steel	30	NPT 1/4"	-	-

Indications in mm

# Vacuum Components Overview

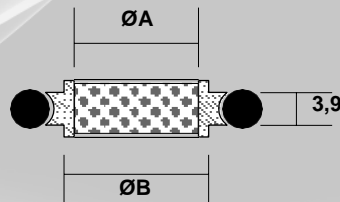
## Seals

### • ISO-KF Centering ring



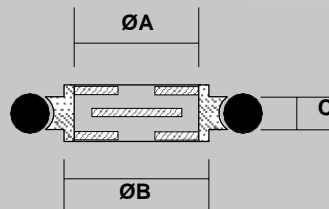
Art. no.	DN	Material	A	B	C	D
ZZR016	16	Stainl. steel / FKM	16	17	-	-
ZZR025	25	Stainl. steel / FKM	25	26	-	-
ZZR040	40	Stainl. steel / FKM	40	41	-	-

### • ISO-KF Centering ring with wire filter



Art. no.	DN	Material	A	B	C	D
ZZDF016	16	Stainl. steel / FKM	16	17	-	-

### • ISO-KF Centering ring with baffle



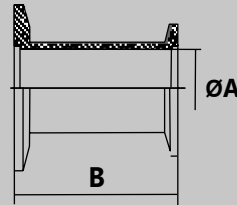
Art. no.	DN	Material	A	B	C	D
ZZCH016	16 KF	Stainl. steel/ FKM	16	17	3,9	-
ZZCH025	25 KF	Stainl. steel / FKM	25	26	3,9	-
ZZCH040	40 KF	Stainl. steel / FKM	40	41	3,9	-
ZZCH040CF	40 CF	Stainl. steel	-	36	4,7	-

Indications in mm

# Vacuum Components Overview

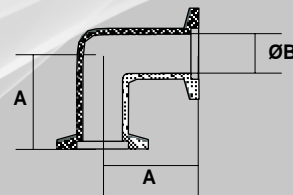
## Piping components

### • ISO-KF Reducing piece



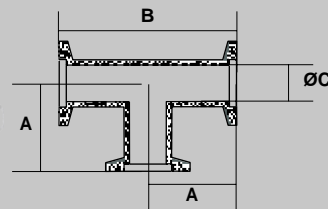
Art. no.	DN	Material	A	B	C	D
ZRRG2516	25	Stainl. steel	16	28	-	-
ZRRG4025	40	Stainl. steel	25	28	-	-

### • ISO-KF Elbow pipe 90°



Art. no.	DN	Material	A	B	C	D
ZBA016	16	Aluminium	40	16	-	-
ZBS016	16	Stainl. steel	40	16	-	-
ZBS025	25	Stainl. steel	50	25	-	-
ZBS040	40	Stainl. steel	65	40	-	-

### • ISO-KF T-piece

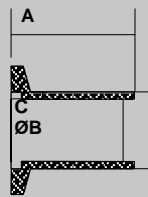


Art. no.	DN	Material	A	B	C	D
ZTA016	16	Aluminium	40	80	16	-
ZTS016	16	Stainl. steel	40	80	16	-
ZTA025	25	Aluminium	50	100	24	-

Indications in mm

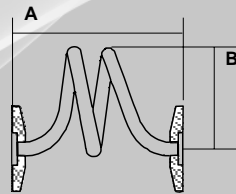
# Vacuum Components Overview

## • ISO-KF Welding flange



Art. no.	DN	Material	A	B	C	D
ZSF016	16	Stainl. steel 1.4301	26	20	2	-
ZSFL016	16	Stainl. steel 1.4301	70	20	2	-
ZSF025	25	Stainl. steel 1.4301	26	28	2	-
ZSFL025	25	Stainl. steel 1.4301	70	28	2	-

## • Spiral pipe



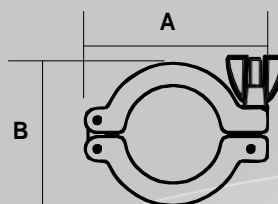
Art. no.	DN	Material	A	B	C	D
ZSST016	16	Stainl. steel				
ZSST025	25	Stainl. steel				

Indications in mm

# Vacuum Components Overview

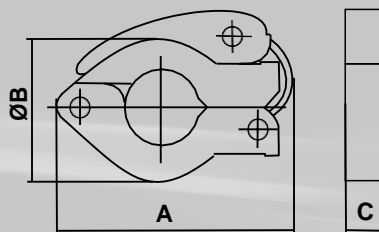
## Fastening elements

- ISO-KF Standard clamp, aluminium



Art. no.	DN	A	B	C	D
ZSR1016	10 / 16	62	41	-	-
ZSR2025	20 / 25	72	52	-	-
ZSR3240	32 / 40	90	68	-	-

- ISO-KF Quick-release clamp, aluminium / plastic



Art. no.	DN	A	B	C	D
ZSSR1016	10 / 16	68	45	16	-
ZSSR2025	20 / 25	80	55	16	-
ZSSR3240	32 / 40	98	70	16	-

Indications in mm



# Vacuum Components

## Adapters, reducers, fittings

---



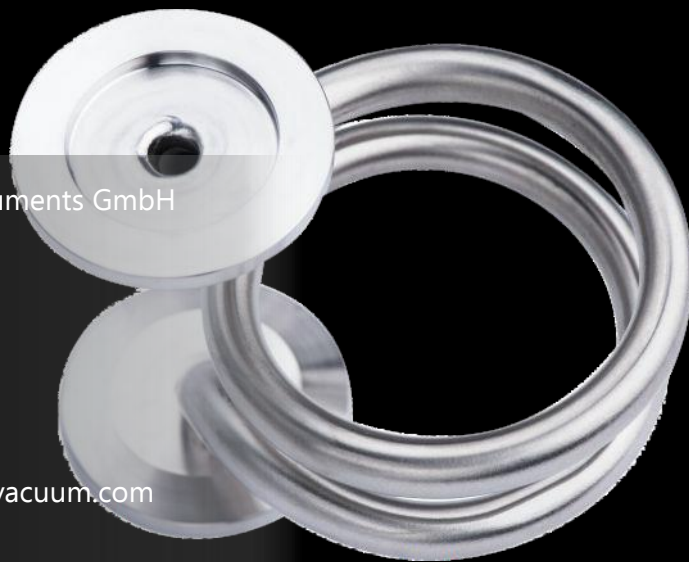
Thyracont Vacuum Instruments GmbH

Max-Emanuel-Straße 10

94036 Passau, Germany

Tel.: +49 (0)851 95986 0

E-Mail: [info@thyracont-vacuum.com](mailto:info@thyracont-vacuum.com)



Änderungen vorbehalten, Version 20180427